

新星飛揚 乘勢而上

The Plan for Space Industry Supply Chain Development and
Communications Industry Talent Empowerment

Talent Recruitment Platform User Guide

September 8, 2025

| Organizer |



經濟部產業發展署
Industrial Development Administration, MOEA

| Implementer |



台北市電腦公會
TAIPEI COMPUTER ASSOCIATION

Seniors and Newcomers are welcomed to Join or Update Space & Telecom Industry Talent Recruitment Platform

Space & Telecom Industry Talent Recruitment Platform



Missed the R&D Internship? Want to join the Space & Telecom Industry? Now is the time!

Upload or update your resume to receive the latest job openings.

1. Platform Open Period: September 1, 2025 – December 31, 2025

2. Eligibility: Enrolled Students and Fresh Graduates

(excluding Mainland China, Hong Kong, and Macau students)

3. Notes:

- Students who update or submit their resumes from September 1 to October 6 will receive a list of job openings provided by the Program, including salary information and direct contact emails for applications.
- During the platform's open period, companies will use it to recruit talent and proactively reach out to candidates.

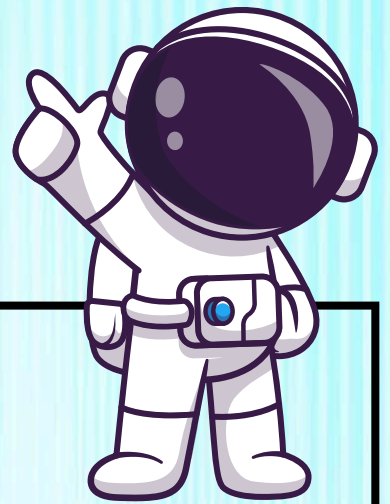
This platform allows students to sign up or update their resumes and enables companies to search for talent. It is free of charge, does not provide recommendations, and does not intervene in the matching process. The final results are determined directly between companies and students.

Find out more about

Space & Telecom Industry Talent Recruitment Platform

Sign up now for the Briefing Session !

✦ Know more about our program ✦ Latest Job Openings ✦ Lucky draw



Event	Time	Location
Southern Session	Tuesday, September 23 12:00–13:00	Room 41101, Department of Engineering Science, National Cheng Kung University (No. 1, University Road, East District, Tainan City, Taiwan)
Northern Session	Thursday, September 25 12:20–13:10	Room 203, College of Management Building II, National Taiwan University (No.1, Sec. 4, Roosevelt Rd., Taipei)

 Lunch boxes will be provided on-site.
Limited spots available, so sign up now!

 [Click here to register for the
Southern Session](#)

 [Click here to register for the
Northern Session](#)

Seniors One-Page Platform User Guide

(Same application process as before)



太空產業供應鏈暨
網通產業新星飛揚計畫
The Plan for Space Industry Supply Chain Development and
Communications Industry Talent Empowerment

① Enter the website: <https://eii.nat.gov.tw/satcom/>

Space



② Click Register

③ Sign Up and Click Here

Basic information and education Work experience and social media Skills and certifications **Expectations and autobiography**

Expectation

subFields of Interest

☐ Open Network ☒ System Integration ☐ Private Network Terminal Equipment ☐ Component/Transmission ☐ Application

☐ Key Components ☐ Subsystem ☐ System Integration Terminal ☐ Others

☐ Taipei City ☐ New Taipei City ☒ Taoyuan City ☐ Taichung City ☐ Tainan City ☐ Kaohsiung City ☐ Keelung City

☐ Hsinchu City ☐ Chiayi City ☐ Hsinchu County ☐ Miaoli County ☐ Changhua County ☐ Nantou County ☐ Yunlin County

Preferred work* location (up to three)

☒ Chiayi County ☐ Pingtung County ☐ Yilan County ☐ Hualien County ☐ Taitung County ☐ Penghu County ☐ Kinmen County

☐ Lienchiang County

Autobiography

Please enter your personal autobiography...

Registration will be completed after all 4 sections are filled in

① Enter the website: <https://eii.nat.gov.tw/5g-jump/>

② Click Register

5G



③

Profile Picture

Student Name

Register Email

status **Pending**

Field 5G

Education -

Binding Company -

Edit resume

The resume can still be edited after being submitted

Notice:

1. Companies will contact you with the provided information—please make sure it's correct.
2. After saving, submit again so the company can see your latest update.

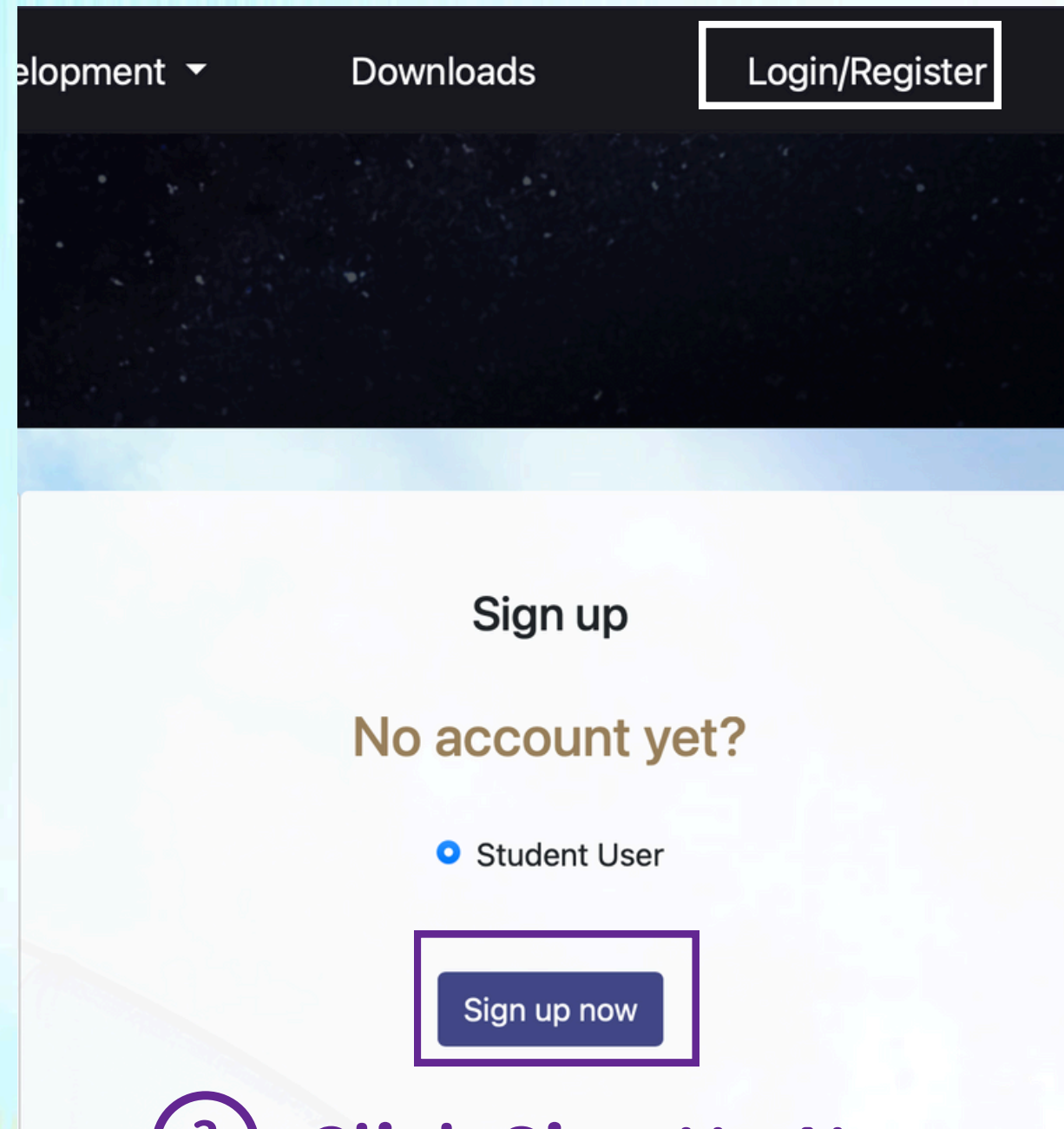
Newcomers Platform User Guide (1/4)



太空產業供應鏈暨
網通產業新星飛揚計畫
The Plan for Space Industry Supply Chain Development and
Communications Industry Talent Empowerment

space

- 1 Enter the website:
<https://eii.nat.gov.tw/satcom/>



- 3 Click Sign Up Now

5G

- 1 Enter the website:
<https://eii.nat.gov.tw/5g-jump/>



- 3 Click Sign Up Now

Newcomers Platform User Guide (2/4)



太空產業供應鏈暨
網通產業新星飛揚計畫
The Plan for Space Industry Supply Chain Development and
Communications Industry Talent Empowerment

Space

4

Click I agree after reading the Privacy Policy and Consent

學生用戶註冊(* 為必填項目)
Sign up (*Required information)

姓名 Full Name *

請填入真實姓名，將成為計畫報名用，且無法再修改

會員帳號 Account (Personal email) *

請輸入常用Email，將用於登入本網站與管理密碼，請正確填寫

就讀學校 School *

請選擇就讀學校

密碼 Password *

長度為12~15個字元，包含數字與符號
(12-15 characters, no special characters are allowed)

請填密碼

確認密碼 Repeat password *

請確認密碼

5

Click Sign Up after filling in the information

送出 Sign up

5G

4

Click I agree after reading the Privacy Policy and Consent

一般會員註冊(* 為必填項目)
Sign up (*Required information)

姓名 Full Name *

請填入真實姓名，將成為計畫報名用，且無法再修改

會員帳號 Account (Personal email) *

請輸入常用Email，將用於登入5G JUMP與管理密碼，請正確填寫。

ex: JoshSmith@foo.bar

就讀學校 School *

請選擇就讀學校

密碼 Password *

長度為12~15個字元，包含數字與符號
(12-15 characters, no special characters are allowed)

請填密碼

確認密碼 Repeat password *

請確認密碼

5

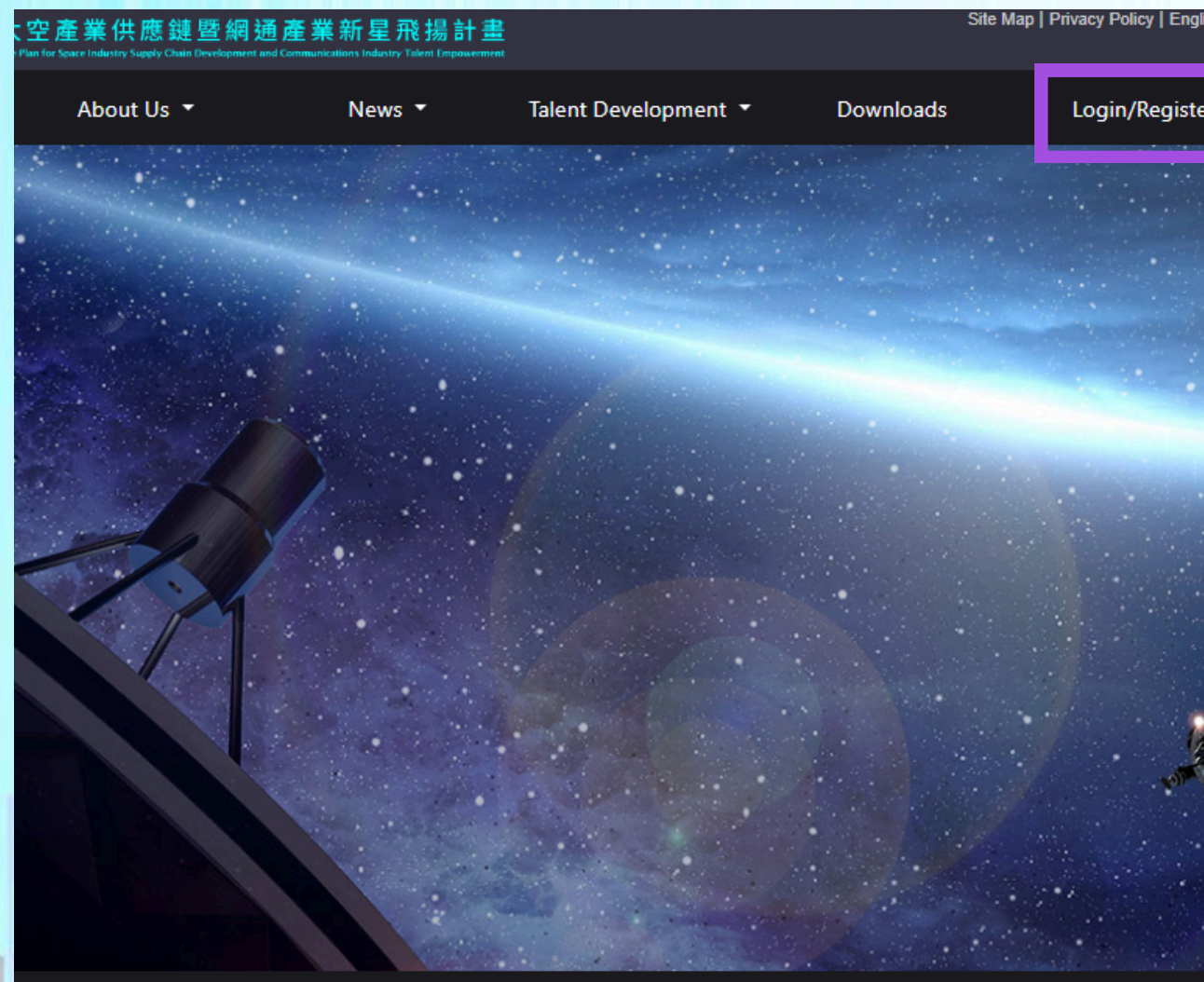
Click Sign Up after filling in the information

送出 Sign up

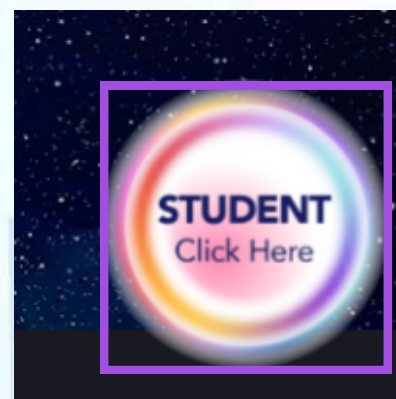
Newcomers Platform User Guide (3/4)

Space

⑥ Back to the Website
<https://eii.nat.gov.tw/satcom/>



⑦ Log In First



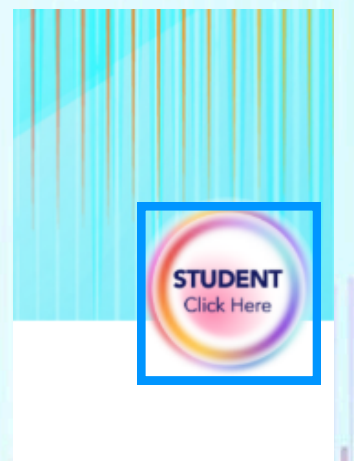
⑧ Click Here

5G

⑥ Back to the Website:
<https://eii.nat.gov.tw/5g-jump/>



⑦ Log In First



⑧ Click Here



Basic information and educationWork experience and social mediaSkills and certificationsExpectations and autobiography

Expectation

subFields of Interest

☐ Open Network☒ System Integration☐ Private Network Terminal Equipment☐ Component/Transmission☐ Application

☐ Key Components☐ Subsystem☐ System Integration Terminal☐ Others

☐ Taipei City☐ New Taipei City☒ Taoyuan City☐ Taichung City☐ Tainan City☐ Kaohsiung City☐ Keelung City

☐ Hsinchu City☐ Chiayi City☐ Hsinchu County☐ Miaoli County☐ Changhua County☐ Nantou County☐ Yunlin County

Preferred work* location (up to three)

☒ Chiayi County☐ Pingtung County☐ Yilan County☐ Hualien County☐ Taitung County☐ Penghu County☐ Kinmen County

☐ Lienchiang County

Autobiography

Please enter your personal autobiography...

9 Registration will be completed after all 4 sections are filled in

Student registration

Personal Resume

Student Name

Register Email

status Pending

Field 5G

Education -

Binding Company -

Edit resume

Profile Picture

The resume can still be edited after being submitted

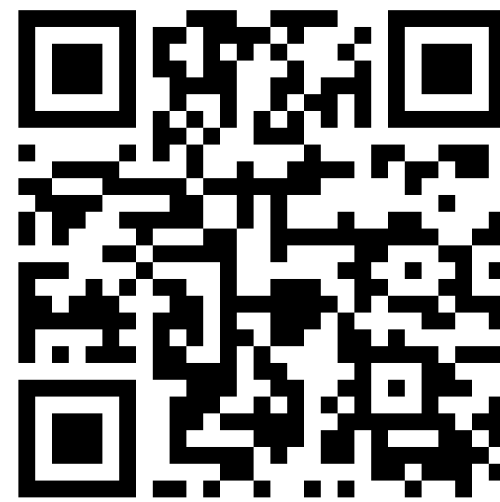
Notice:

1. Companies will contact you with the provided information—please make sure your contact information is correct.
2. After saving, please submit again so companies can see your latest update.

新星飛揚 乘勢而上



The Plan for Space Industry Supply Chain Development and
Communications Industry Talent Empowerment



For More Information: <https://linktr.ee/SpaceCommTalents>